



## 2018 Project Review Sheet (2019 Construction)

### City Council District 2

Ballot #2C

<b>Project #</b>	<b>18-231</b>
<b>Project Title:</b>	<b>Crossing Improvements at Lake Washington and Genesee Park Connection</b>
<b>Location:</b>	<b>Lake Washington Blvd S and 45<sup>th</sup> Ave S</b>

### SDOT Project Summary

SDOT approves project

- Yes
- Yes, with revisions
- No

Comments: This location has multiple hours with 20+ pedestrians per hour. To improve pedestrian safety, the recommendation is to install a raised crosswalk with new curb ramp and curb bulb at the corner of 46<sup>th</sup> Ave S and Lake Washington Blvd. This project will require partnership with the Parks Department. A secondary option for project location would be further west (away from the corner).

There is an opportunity to partner with another program:

- Yes
- No

Partnering Program: Pedestrian Master Plan (PMP) Crossings

**Total Project Cost: \$90,000**



### **Solution and Comments:**

This review has been completed for use in the 2018 Your Voice, Your Choice: Parks & Streets process.

- 85 percentile speeds = 35mph
- Volume = 7500 ADT
- Multiple hours with 20+ ped crossings
- This project would connect Genesee Park trail to the Stan Sayers Memorial Park
- No transit stops near
- This location is not near a school

The community has indicated a desire for a crossing at this location.

### **Image:**

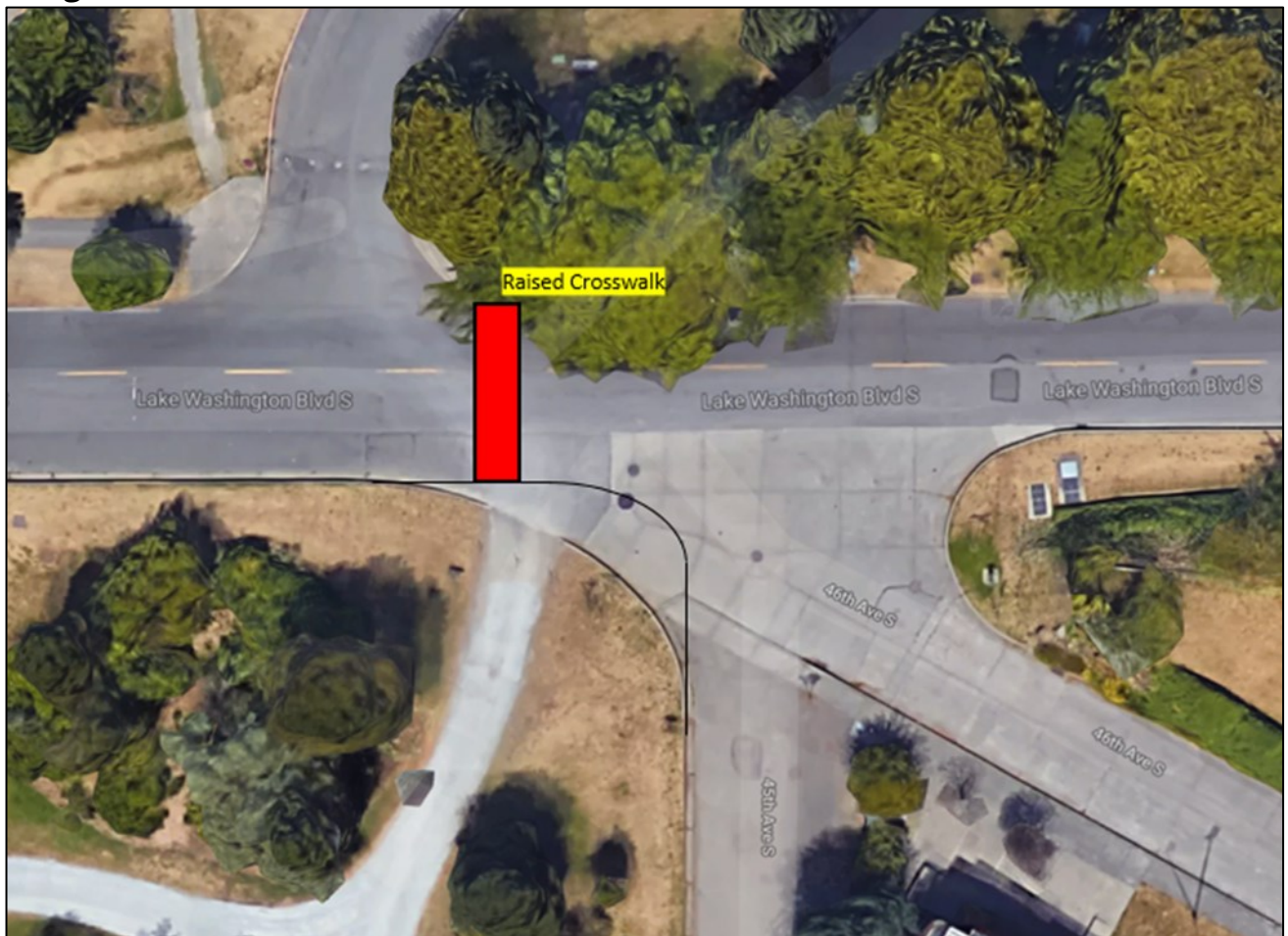


Figure 1: Proposed Improvement

YVYC 2018: 18-231, Lake Washington Blvd S and 45th Ave S



---

## Information Provided by Community Members

**Project Idea:** Cross walk needed to safely connect Genesee Park and Lake Washington

**Need for Project:** Lake Washington Blvd separates Genesee Park from the very popular trail that runs along Lake Washington, Stan Sayers Memorial Park and the Mt. Baker Rowing Center. People making there way from surrounding neighborhoods have to cross a busy road where Lake Washington Blvd curves, 45th and 46th Ave S intersect, and cars from the Park and Boating center are entering/exiting. It's a very popular and treacherous spot to cross the street

**Community Benefit from Project:** Joggers, walkers, boaters, rowers (mostly kids) who often use the park and surrounding hills for their training.



**Risk Registry:**

<b>SDOT Review</b>	<b>Drainage impacts</b>	<b>Constructability</b>	<b>Community process</b>
Med – Speed/Vol data suggests ped signal at location; recorded peds crossing meets standard for crosswalk	Low – Drainage impacts around raised crosswalk	Med – some coordination needed to move trailhead	High – Project was submitted on community behalf

**Cost Estimate:**

<b>Design Phase</b>	
Preliminary Engineering (Survey) Costs	\$ 0
Project Management Costs (City Labor)	\$ 2,527
Design Costs (Consultant Fees, if externally designed, internal labor otherwise) - use 10% of construction cost for in-house design of relative uncomplicated projects	\$ 6,500
<b>Subtotal – Design Phase Costs</b>	\$ 9,027
Design Contingency (10% of Design Phase Subtotal)	\$ 1,003
<b>Total Design Phase Costs</b>	\$ 10,030
Construction Costs (include urban forestry, signs & markings, traffic control, layout or construction staking as necessary)	\$ 56,000
Drainage Costs	\$ 0
Estimating Contingency (10-20%)	\$ 5,600
<b>Subtotal – Construction Costs</b>	\$ 61,500
Construction Management (10-25% of Construction Cost)	\$ 6,150
Construction Contingency (20%)	\$ 12,320
<b>Total Construction Phase Costs</b>	\$ 79,970
<b>Total Project Cost = Total Design and Construction Phase Costs</b>	\$ 90,000